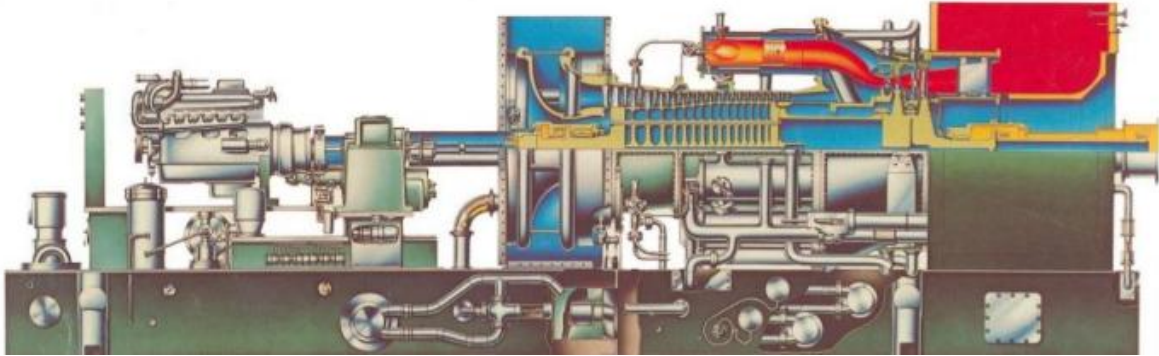


## 4 X MS5001 GAS TURBINES FOR SALE



- AEG KANIS 25,000 KW ISO EACH
- MODEL PG 5341P
- YEAR OF CONSTRUCTIONS NOV 1982
- FUEL LIQUID FUEL(ONLY)
- TO BE DECOMMISSIONED FROM  
DECEMBER 31, 2023
- 17 STAGES AXIAL COMPRESSOR, 2  
STAGES TURBINE
- LESS THAN 6,000 / HOURS

- 4 IDENTICAL SYSTEMS, THESE HAVE ONLY BEEN IN OPERATION FOR A SHORT WHILE AS A PEAK LOAD
- GENERATOR 32 MVA, 10.5KV, 0.8 PF
- CONTROLLER MARK II







